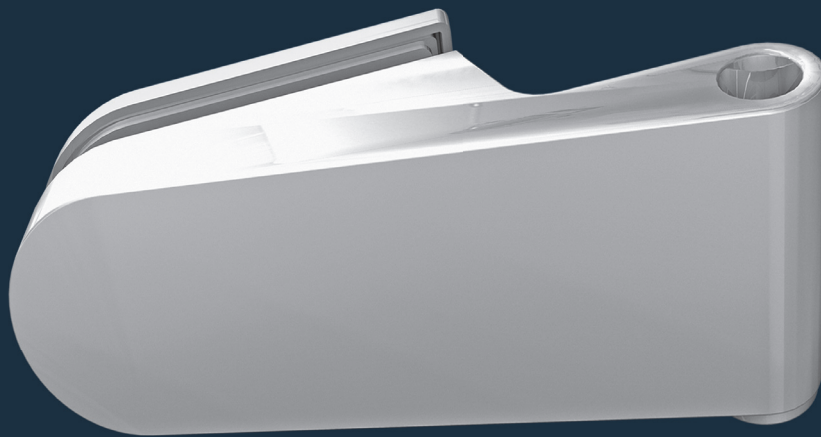


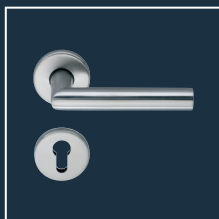
ECO Hardware for glass door handles

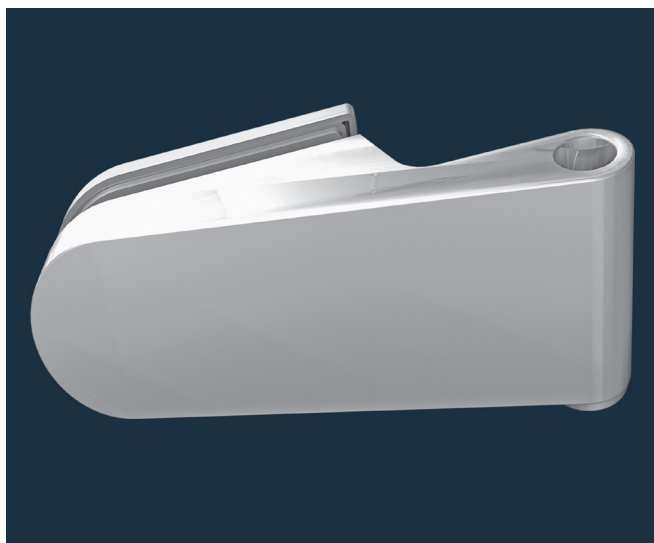
■ Hinges

Product information



■ SYSTEM TECHNOLOGY FOR THE DOOR





Door hinges made of aluminium, or zinc diecasting for glass doors with fixing material

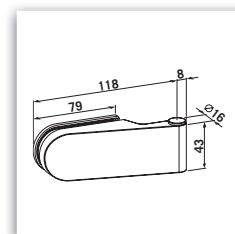
- Same version DIN left and DIN right
- Suitable for 8 mm - 10 mm (toughened safety glass)
- Notch depth for two-part hinge = 24 mm at 8 mm, 26 mm at 10 mm glass
- Notch depth for three-part hinge = 24 mm at 8 mm, 26 mm at 10 mm glass
- Stainless steel screws M6
- Can be combined with standard frame parts
- Installation in frames acc. **DIN 18101 / 18111**
- For door weights up to max. 45 kg with Studio Basic
For door weights up to max. 55 kg with Studio Office
- For door widths up to max. 1.000 mm

Finishes:

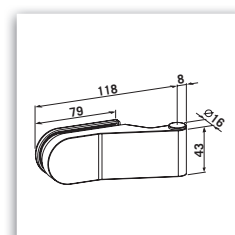
- Stainless steel look, satin
- Aluminium F1 silver anodized



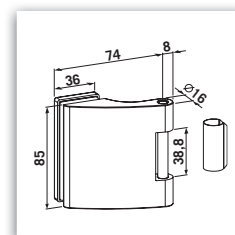
Studio-Basic	Article number	Description	Material
Studio Basic.hinge.ER	990.46	2 Studio-hinges, straight (2-part)	Stainless steel look, satin
Studio Basic.hinge.AI	990.30	2 Studio-hinges, straight (2-part)	Aluminium F1 silver anodized



Studio-Design	Article number	Description	Material
Studio Design.hinge.ER	020.46	2 Studio-hinges, cranked (2-part)	Stainless steel look, satin
Studio Design.hinge.AI	020.30	2 Studio-hinges, cranked (2-part)	Aluminium F1 silver anodized



Studio-Office	Article number	Description	Material
Studio Office.hinge.ER	980.46	1 hinge (3-part)	Stainless steel look, satin
Studio Office.hinge.AI	980.30	1 hinge (3-part)	Aluminium F1 silver anodized





ECO Glass door systems

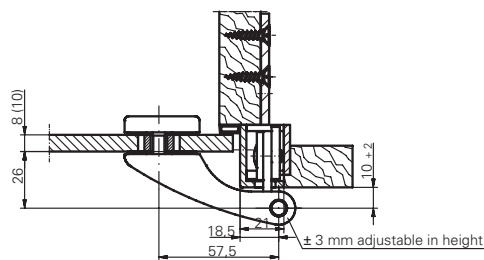
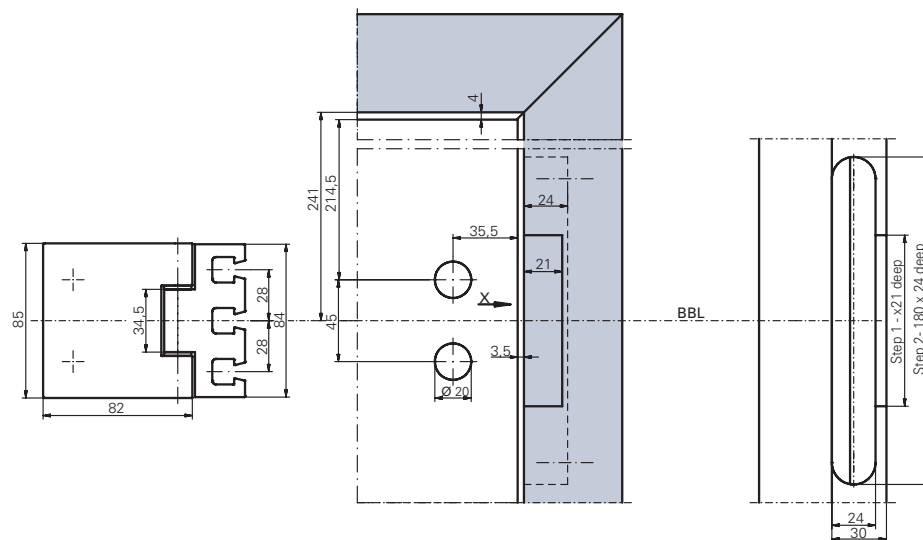
Holistic solutions.

The single components in different executions and finishes offer you system technology for the glass door also in high-end quality: locks, hinges and levers made of aluminium, zinc-diecasting or stainless steel for the use on glass doors based on **DIN 18251** and **EN 1906**. With their form, construction and surface they comply with the holistic solutions of ECO's door hardware.

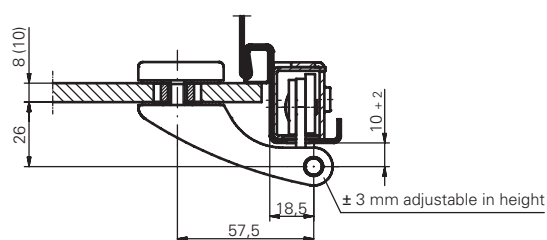
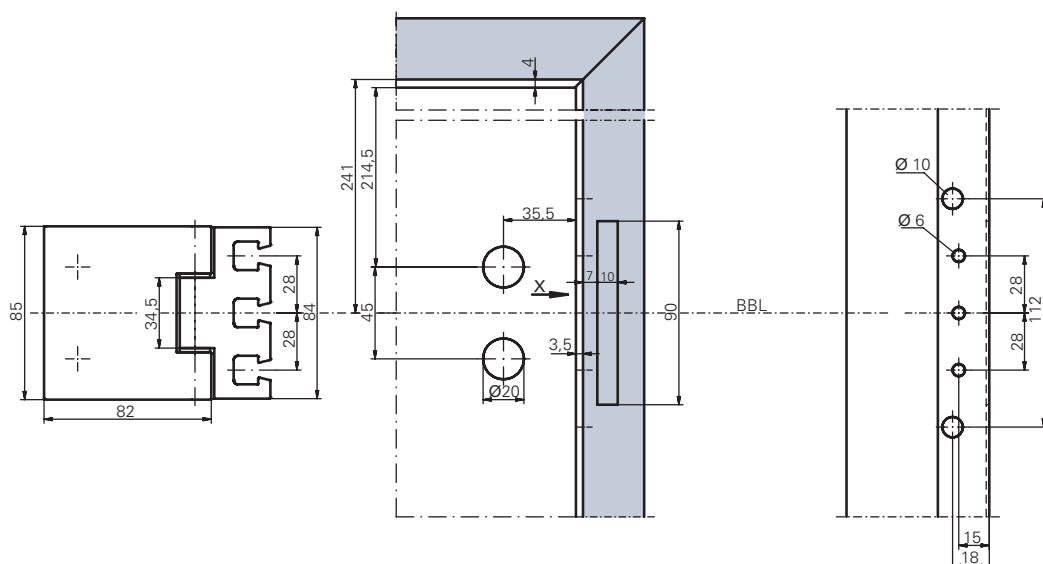
The complete programme of glass door handles has been well thought through. It is completed by hinges, handle sets & lock combinations as well as door closers and floor springs.

Assembly situation

with OBX frame part and adjustable hinge box



For timber frames



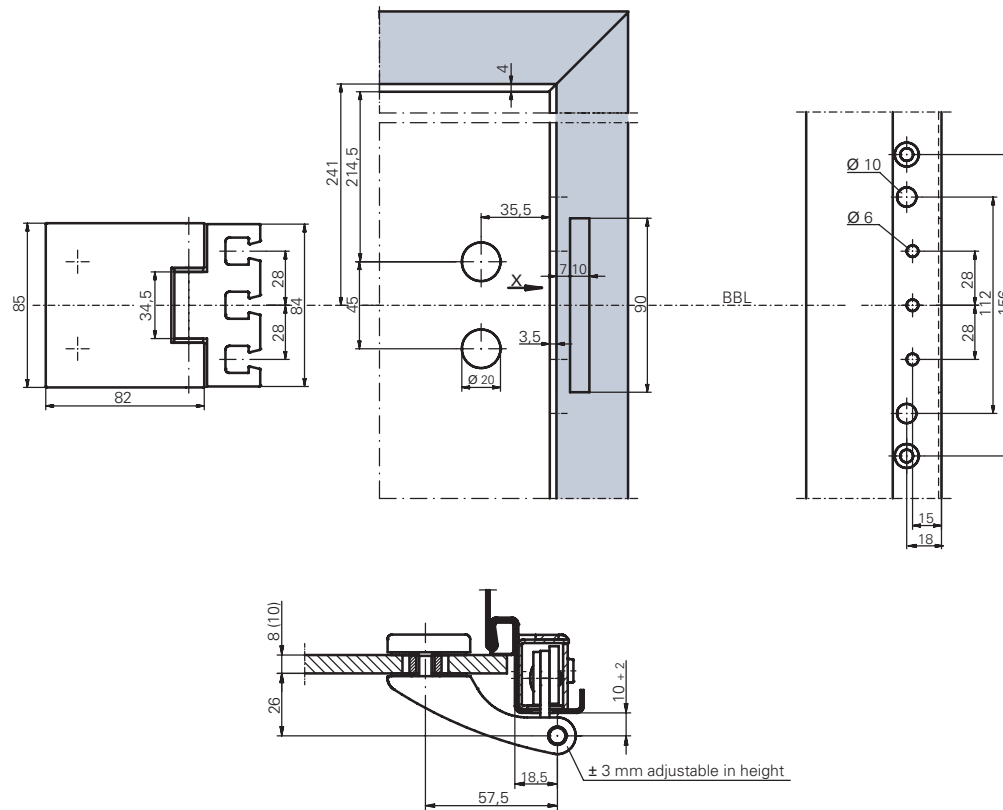
For steel frames



ECO

Assembly situation

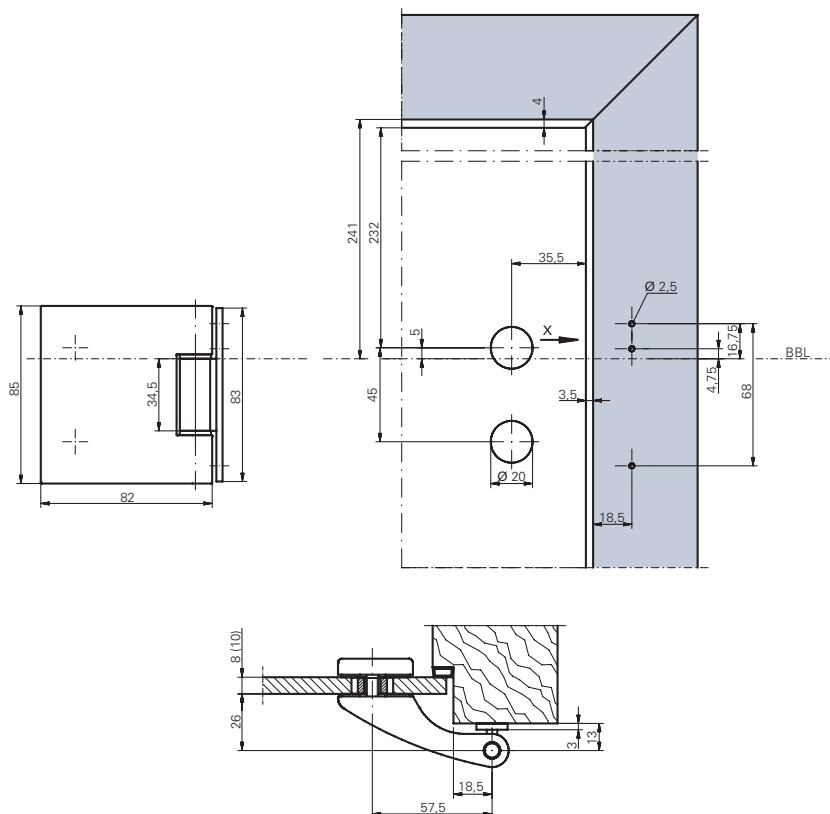
with OBX frame part and adjustable hinge box



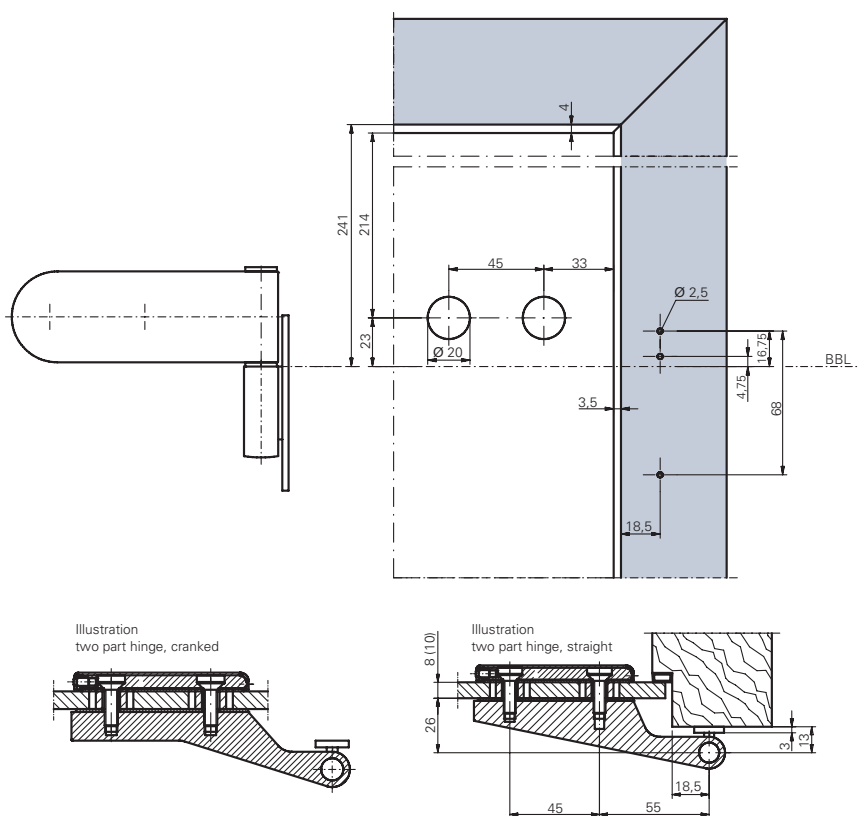
For aluminium frames

Assembly situation

Frame part to be screwed on



For upright standing pillar frame



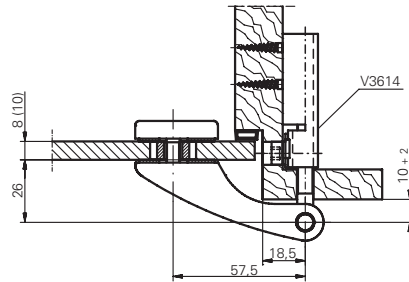
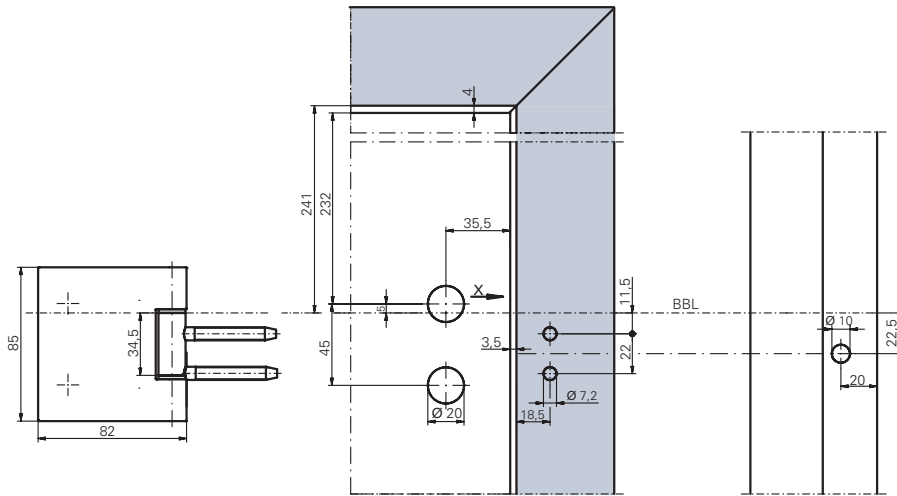
For upright standing pillar frame (2-part hinge)



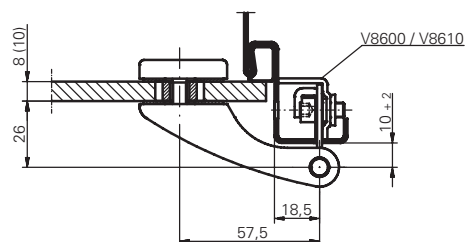
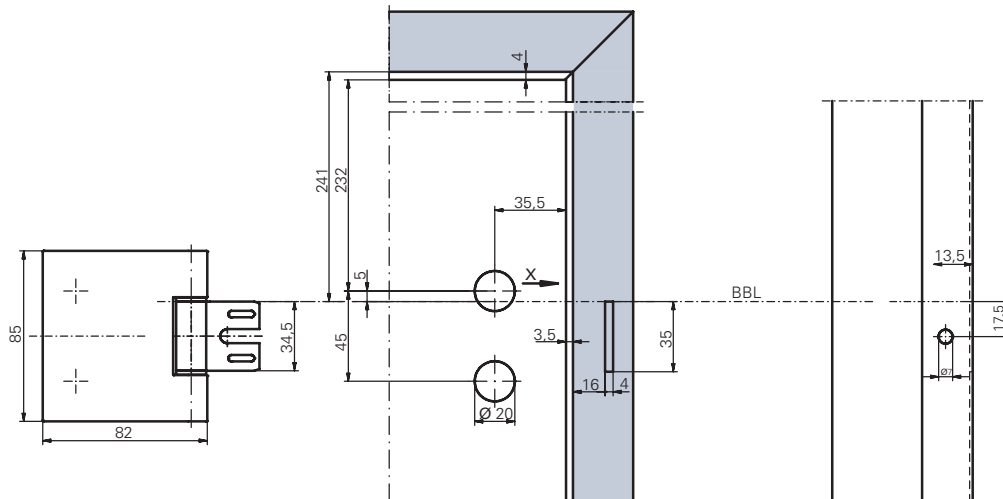
ECO

Assembly situation

Frame part to be mounted in



For timber frames



For steel frames